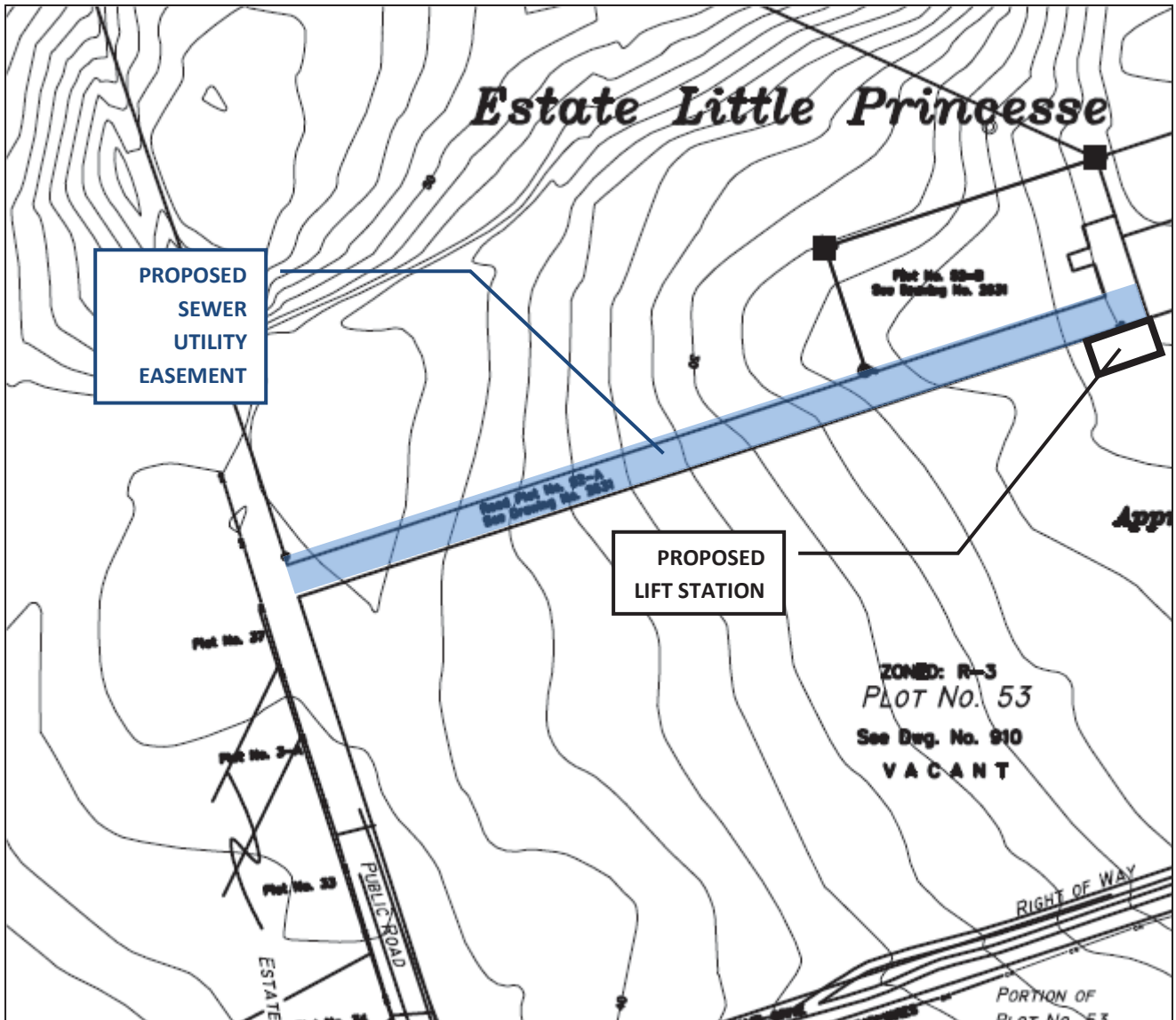


APPENDIX B
Design Drawings
(Preliminary)



941-946 Estate Williams Delight
Frederiksted, VI 00840
PH: 340.712.4962
FX: 340.719.8839

DRAFT SEWER UTILITY EASMENT
LOCATION PLAN

SCALE: NTS

DATE: 11/17/14

SHT: 1

Note these preliminary drawings do not accurately reflect the current location of the lift station or the force main through parcels 53 and 53A.



Relocated Coastal Interceptor
with Lift Station from MH0432,
Force Main to Transition Manhole,
and gravity line to MH0439

New
Connection for
Mill Harbor
Lateral


Demo submerged sewer line
between MH0431 to MH0439

New
Connection for
Colony Cove
Lateral



OVERALL PROJECT LOCATION PLAN - COASTAL INTERCEPTOR REHABILITATION PROJECT

NTS

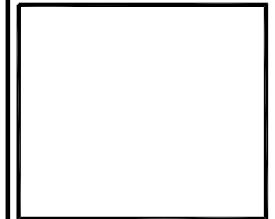
 Virgin Islands Water Management Authority Planning Division	941-946 Estate Williams Delight Frederiksted, VI 00840
	PH: 340.712.4962 FX: 340.719.8839

09-29-13 Revision

Virgin Islands Waste Management Authority Coastal Interceptor Relocation Company Quarter St. Croix, U.S. Virgin Islands

REVISIONS		
NO.	DATE	REMARKS
0	09/10/13	ISSUE FOR CONSTRUCTION

ST. CROIX
COASTAL
INTERCEPTOR
RELOCATION



VIWMA
VIRGIN ISLANDS WASTE MANAGEMENT
AUTHORITY
941-946 Estate Williams Delight
Frederiksted, VI 00840
Telephone: 340.712.4962



COMPANY QUARTER
ST. CROIX, USVI

DATE: 09/10/13

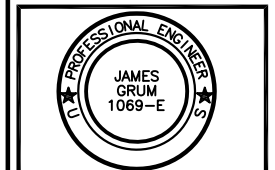
DRAWN DESIGN BY:
T. U. ALBANY NICHOLAS

CHECKED BY:
JAMES GRUM, P.E.
CHIEF ENGINEER

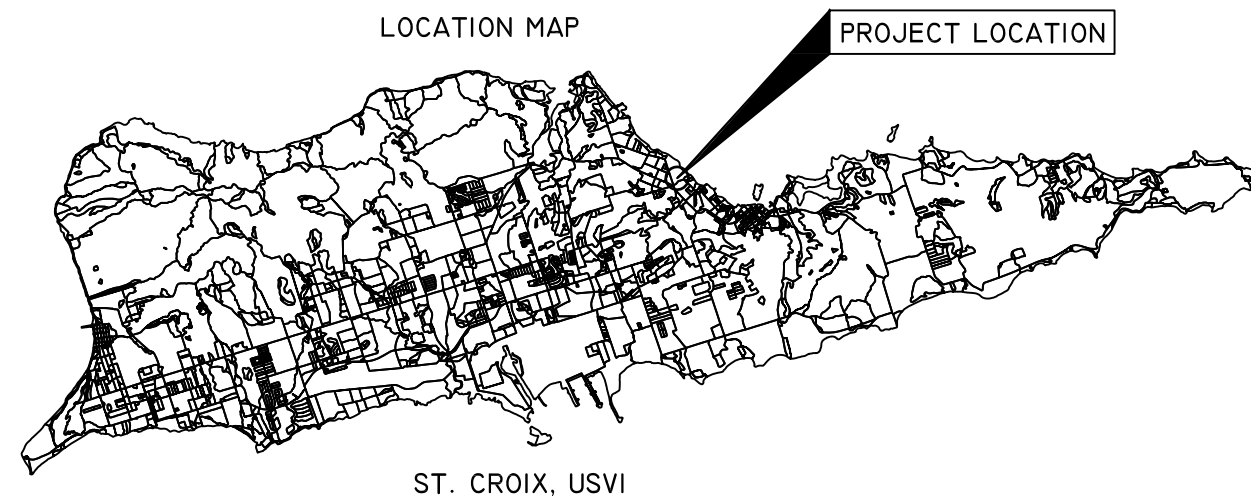
APPROVED BY:
MAY ADAMS CORNWALL, P.E.
EXECUTIVE DIRECTOR

PROJECT NO:

SHEET NO:
OF
SEWER LINE
PLAN AND PROFILE



INDEX OF DRAWING	
DWG NO.	DESCRIPTION
CS	COVER SHEET
DWG NO. 2 OF 6	OVERALL PLAN
DWG NO. 3 OF 6	PLAN STA 0+00 TO STA 10+51 & SEWER PROFILES
DWG NO. 4 OF 6	PLAN STA 10+51 TO STA 11+59 & SEWER PROFILES
DWG NO. 5 OF 6	PLAN STA 11+59 TO STA 22+01 & SEWER PROFILES
DWG NO. 6 OF 6	PLAN STA 22+01 TO STA 27+79 & SEWER PROFILES



PRELIMINARY

Caribbean Sea

NOTE:
The contours shown on this map, layer 31 & 33 appear to be approximately 2 ft. higher than TIDAL Datum and are substantially off in some locations.

These contours are from the 1995 Army Corps of Engineers DIGITAL ORTHOPHOTO.

These contours should be used for conceptual design only.

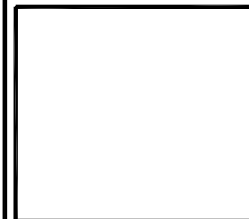
NOTE:

The contours shown along the Public Roadway to the East of HARBORVIEW Apartments are based on an "on the ground" survey.

Please take note of the newly laid Fiber Optic Cable

REVISIONS		
NO.	DATE	REMARKS
0	09/10/13	ISSUE FOR CONSTRUCTION

ST. CROIX COASTAL INTERCEPTOR RELOCATION



VIWMA
VIRGIN ISLANDS WASTE MANAGEMENT
AUTHORITY
941-946 Estate Williams Delight
Frederiksted, VI 00840
Telephone: 340.712.4962



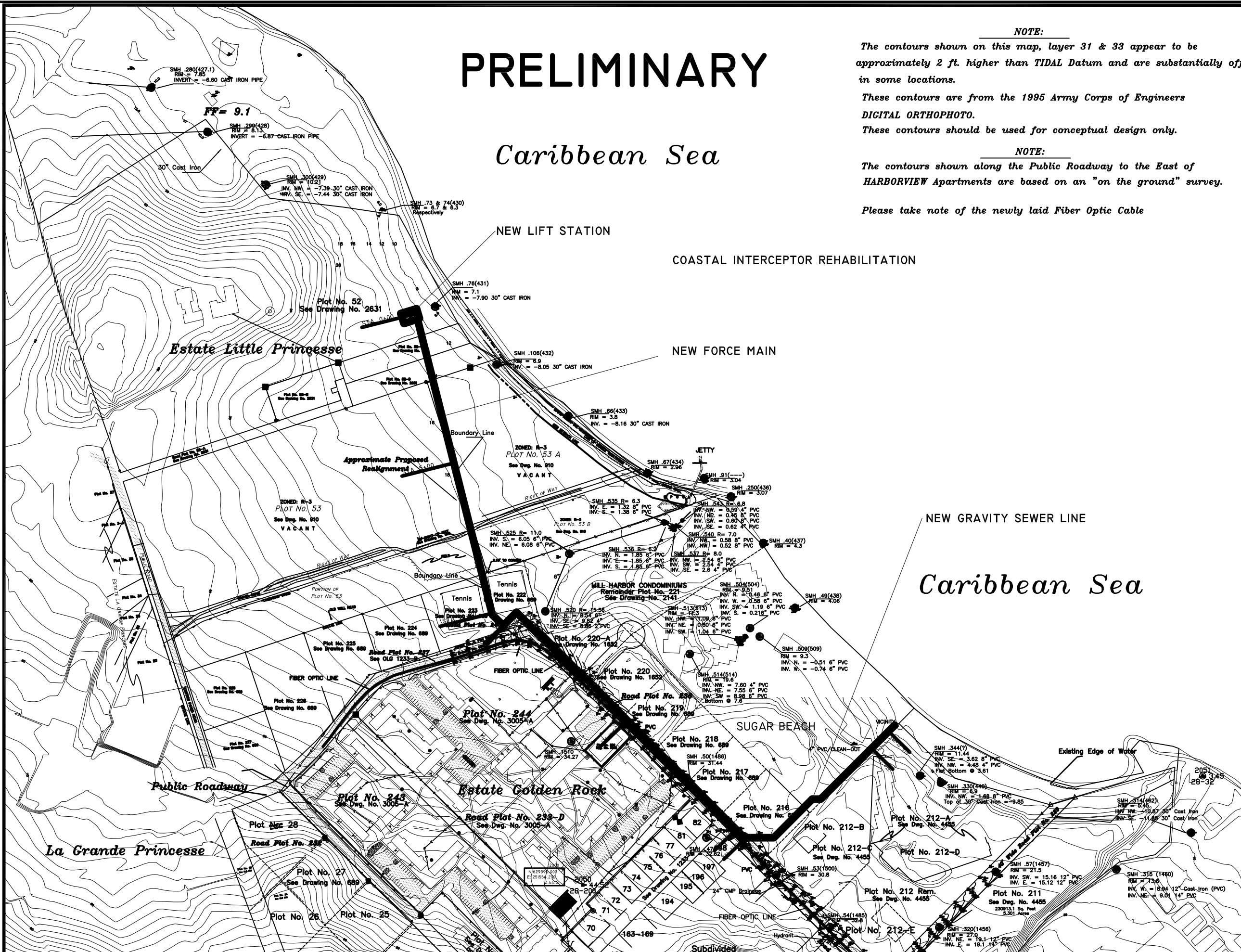
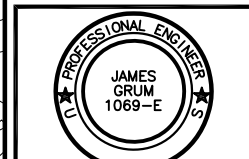
COMPANY QUARTER
ST. CROIX, USVI

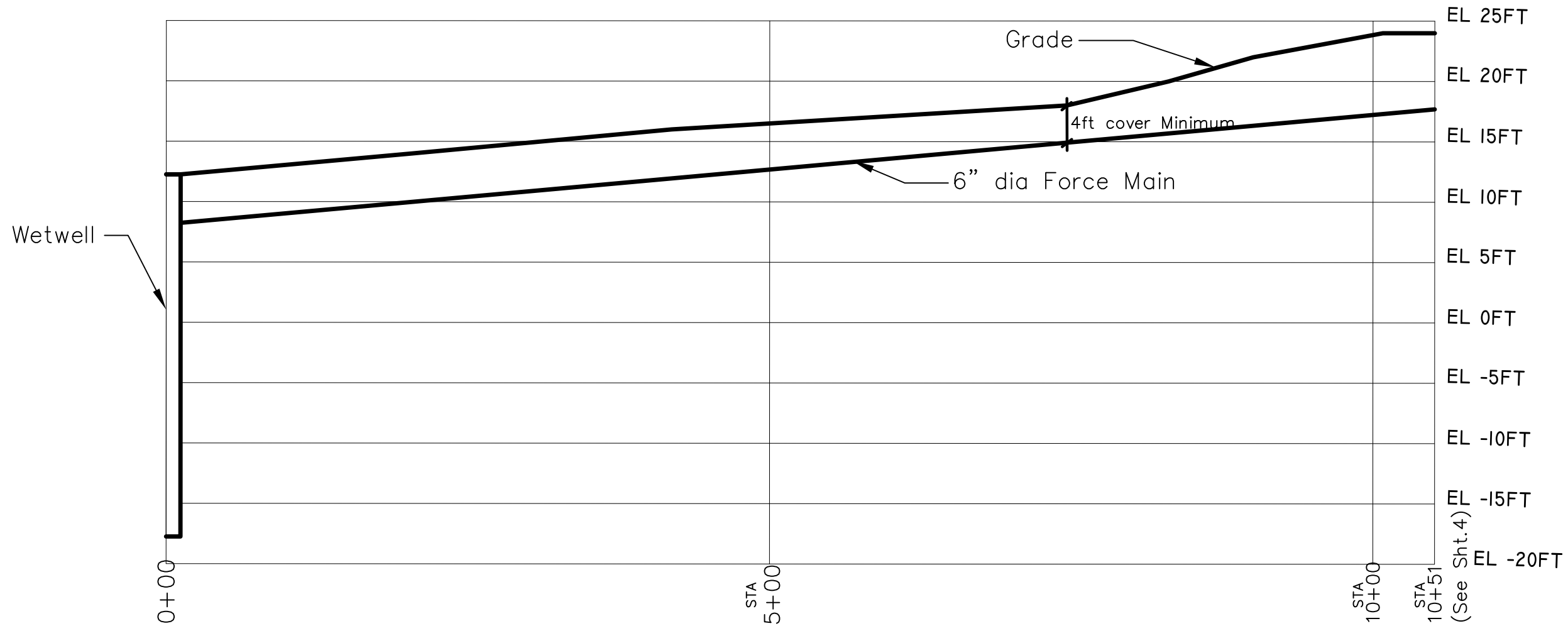
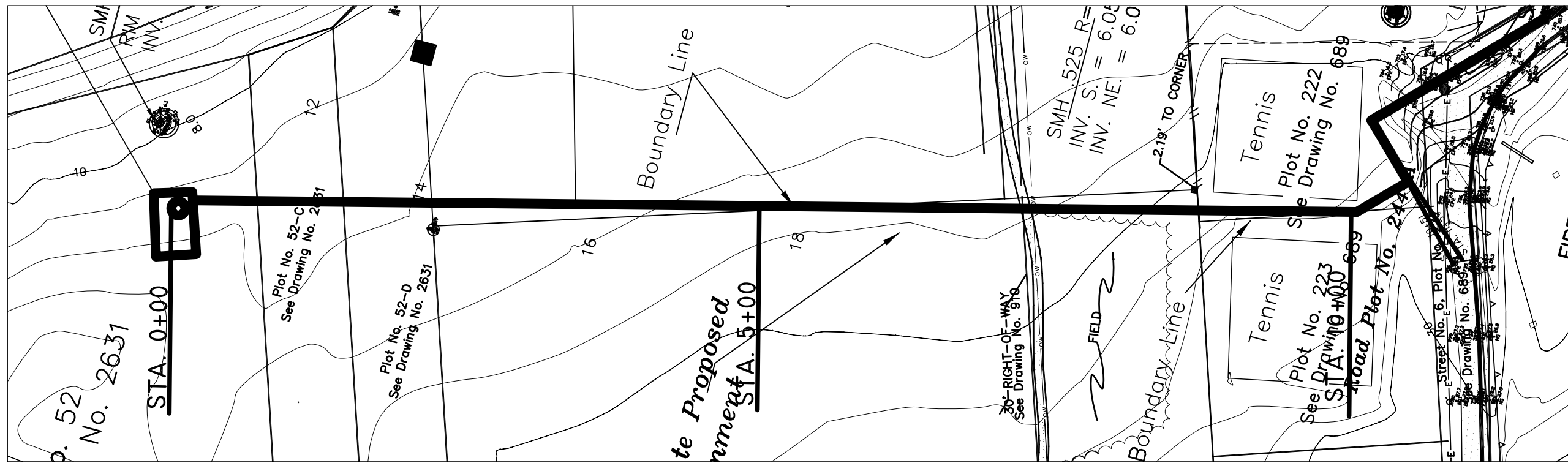
DATE: 09/10/13
DRAWN DESIGN BY: T. U. ALBANY NICHOLAS
CHECKED BY: JAMES GRUM, P.E.
CHIEF ENGINEER

APPROVED BY: MAY ADAMS CORNWALL, P.E.
EXECUTIVE DIRECTOR

PROJECT NO:

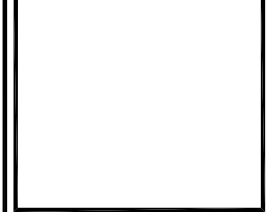
SHEET NO: 2 OF 6
SEWER LINE
PLAN AND PROFILE





REVISIONS		
NO.	DATE	REMARKS
0	09/10/13	ISSUE FOR CONSTRUCTION

**ST. CROIX
COASTAL
INTERCEPTOR
RELOCATION**



VIWMA
VIRGIN ISLANDS WASTE MANAGEMENT
AUTHORITY
941-946 Estate Williams Delight
Frederiksted, VI 00840
Telephone: 340.712.4962



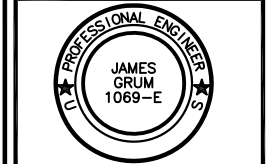
**COMPANY QUARTER
ST. CROIX, USVI**

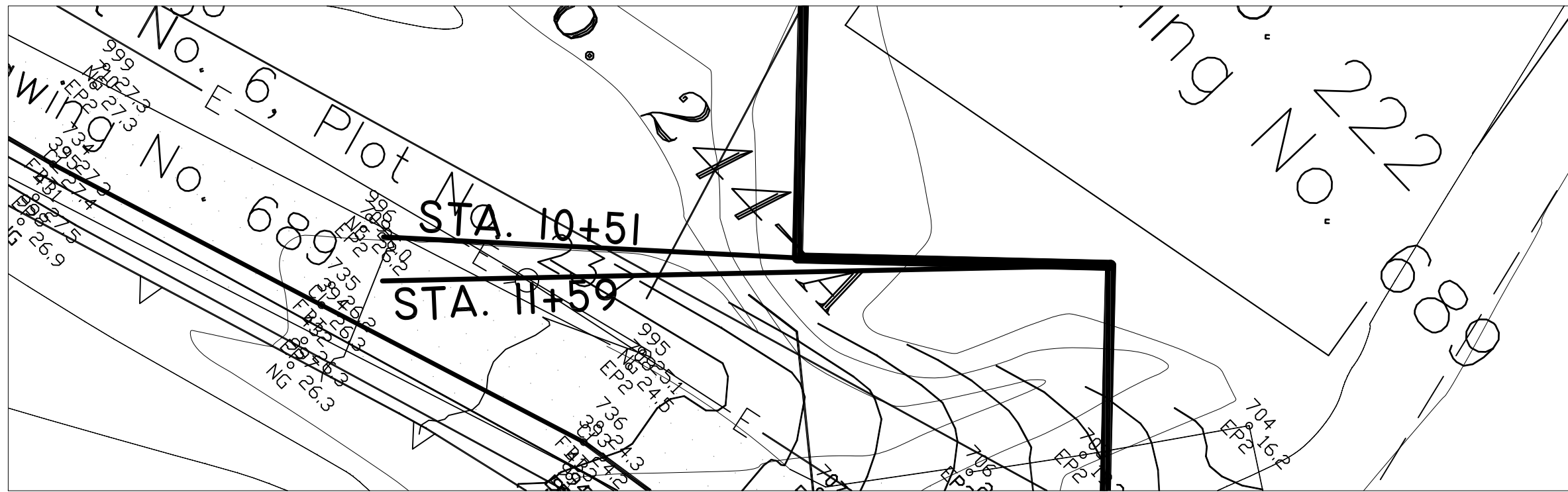
DATE: **09/10/13**
DRAWN DESIGN BY:
T. U. ALBANY NICHOLAS
CHECKED BY:
**JAMES GRUM, P.E.
CHIEF ENGINEER**
APPROVED BY:
**MAY ADAMS CORNWALL, P.E.
EXECUTIVE DIRECTOR**

PROJECT NO:

SHEET NO:
3 OF 6

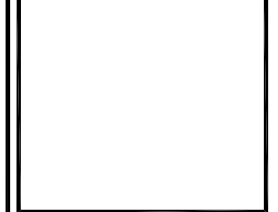
**SEWER LINE
PLAN AND PROFILE**





REVISIONS		
NO.	DATE	REMARKS
0	09/10/13	ISSUE FOR CONSTRUCTION

**ST. CROIX
COASTAL
INTERCEPTOR
RELOCATION**



VIWMA
VIRGIN ISLANDS WASTE MANAGEMENT
AUTHORITY
941-946 Estate Williams Delight
Frederiksted, VI 00840
Telephone: 340.712.4962



**COMPANY QUARTER
ST. CROIX, USVI**

DATE: **09/10/13**

DRAWN DESIGN BY:
T. U. ALBANY NICHOLAS

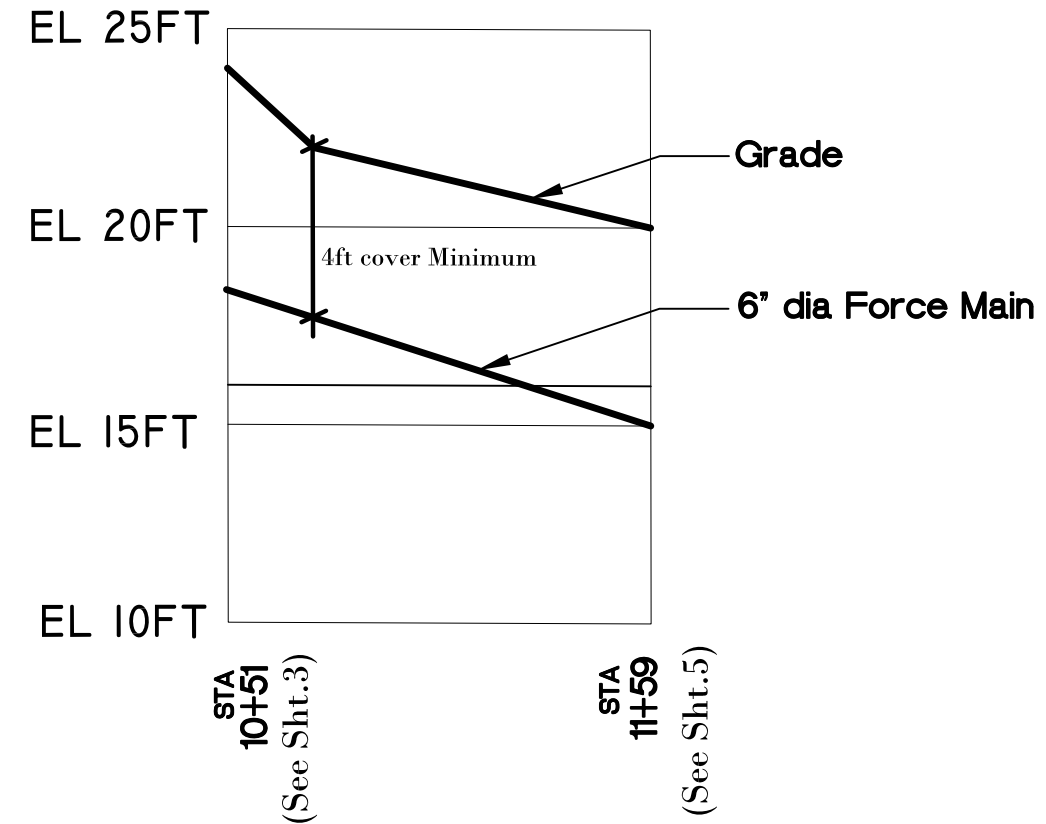
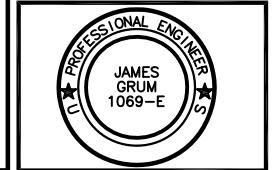
CHECKED BY:
**JAMES GRUM, P.E.
CHIEF ENGINEER**

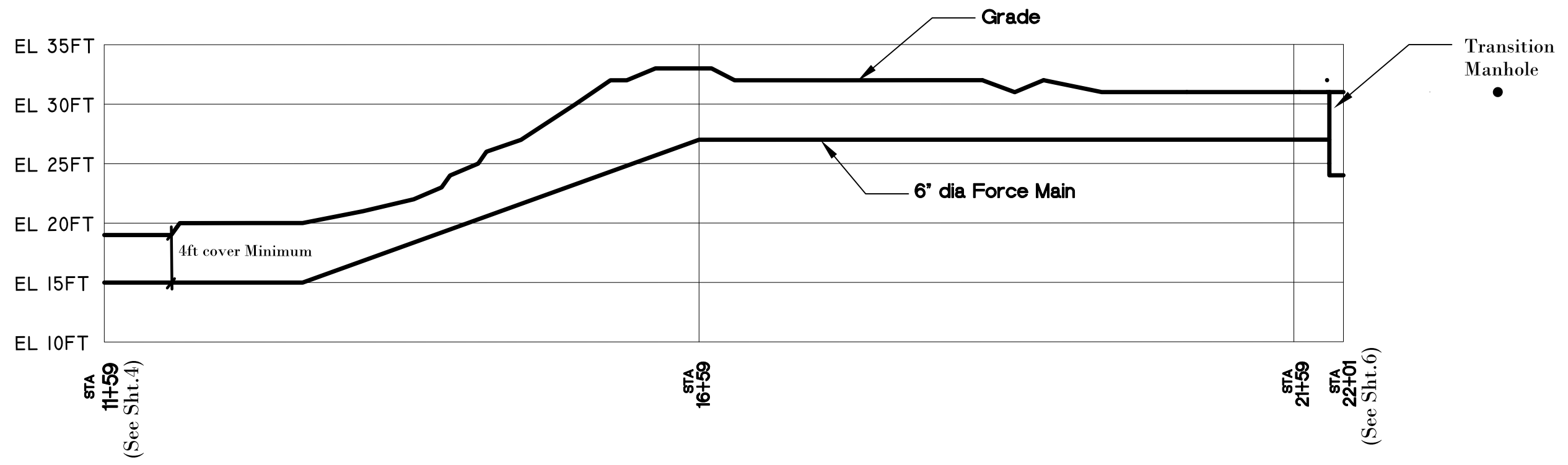
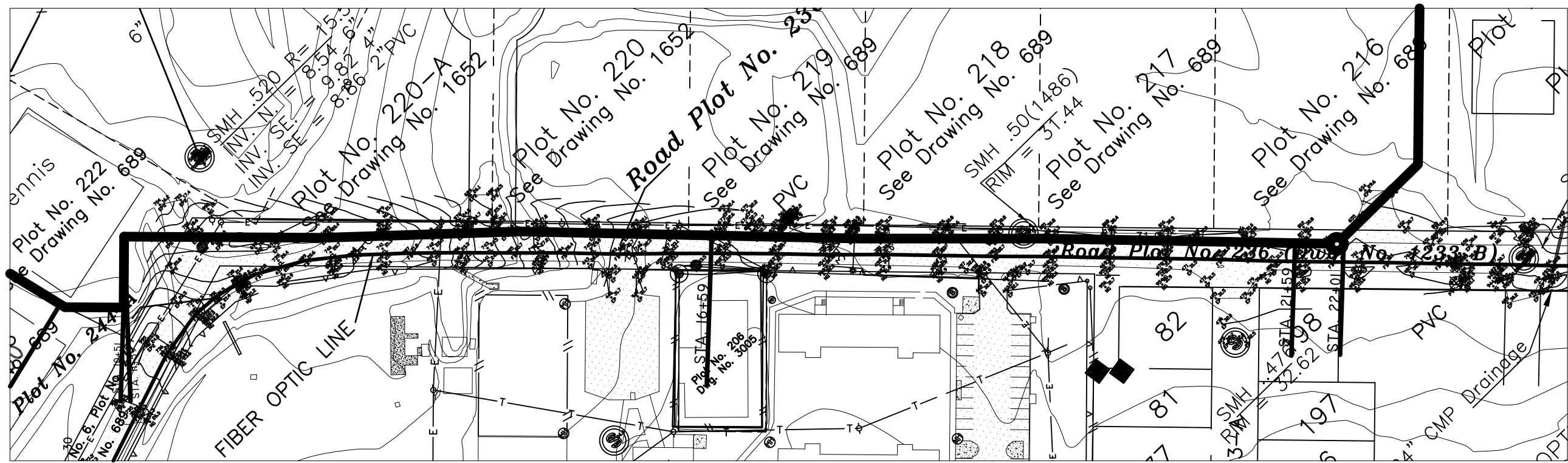
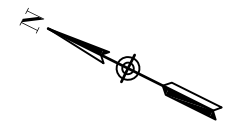
APPROVED BY:
**MAY ADAMS CORNWALL, P.E.
EXECUTIVE DIRECTOR**

PROJECT NO:

SHEET NO:
4 OF 6

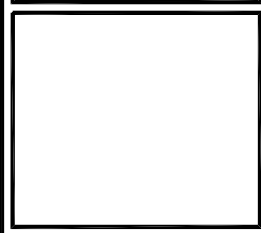
**SEWER LINE
PLAN AND PROFILE**





REVISIONS		
NO.	DATE	REMARKS
0	09/10/13	ISSUE FOR CONSTRUCTION

**ST. CROIX
COASTAL
INTERCEPTOR
RELOCATION**



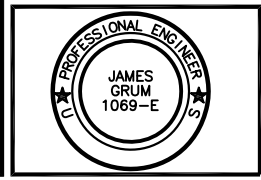
**COMPANY QUARTER
ST. CROIX, USVI**

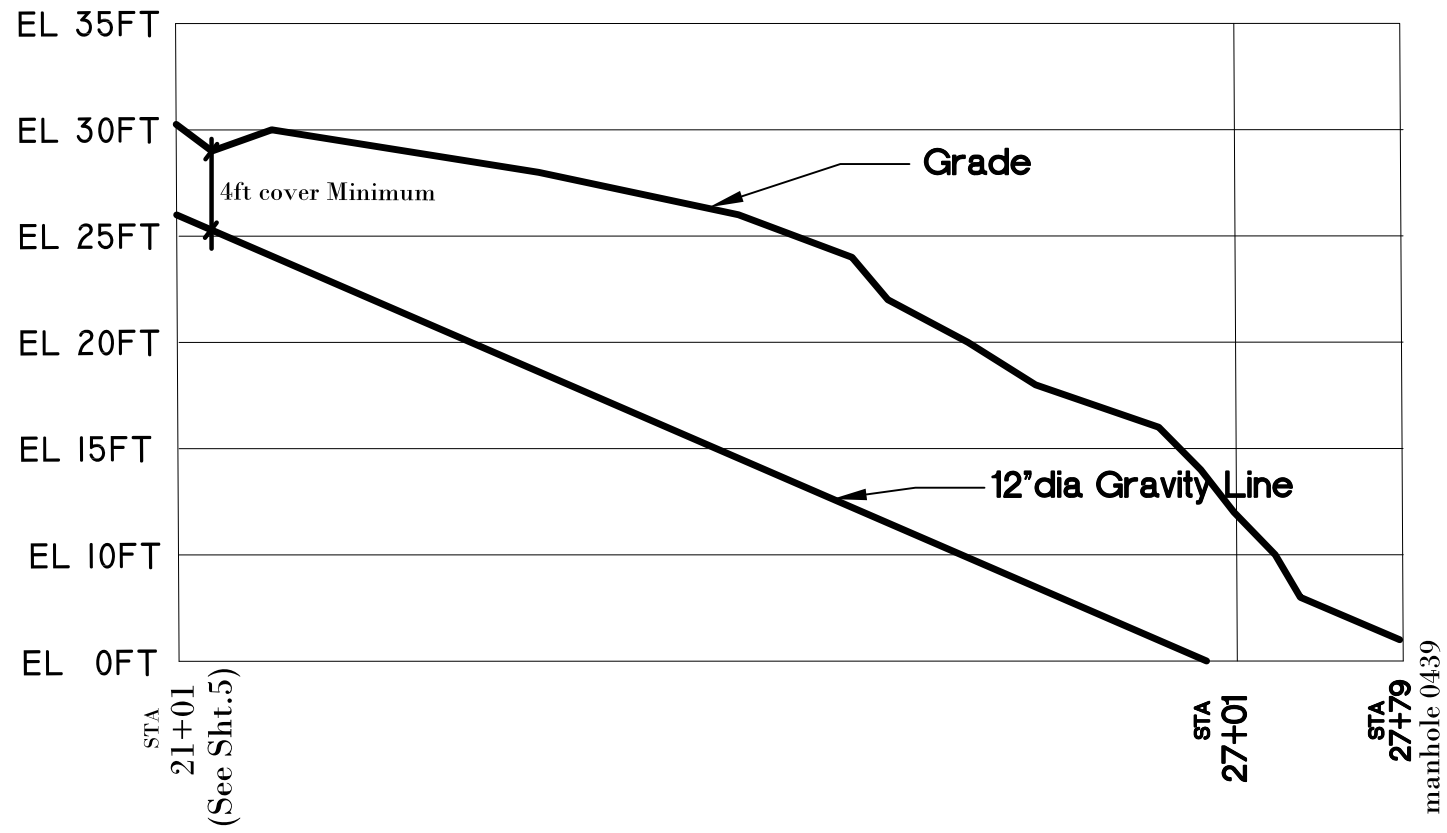
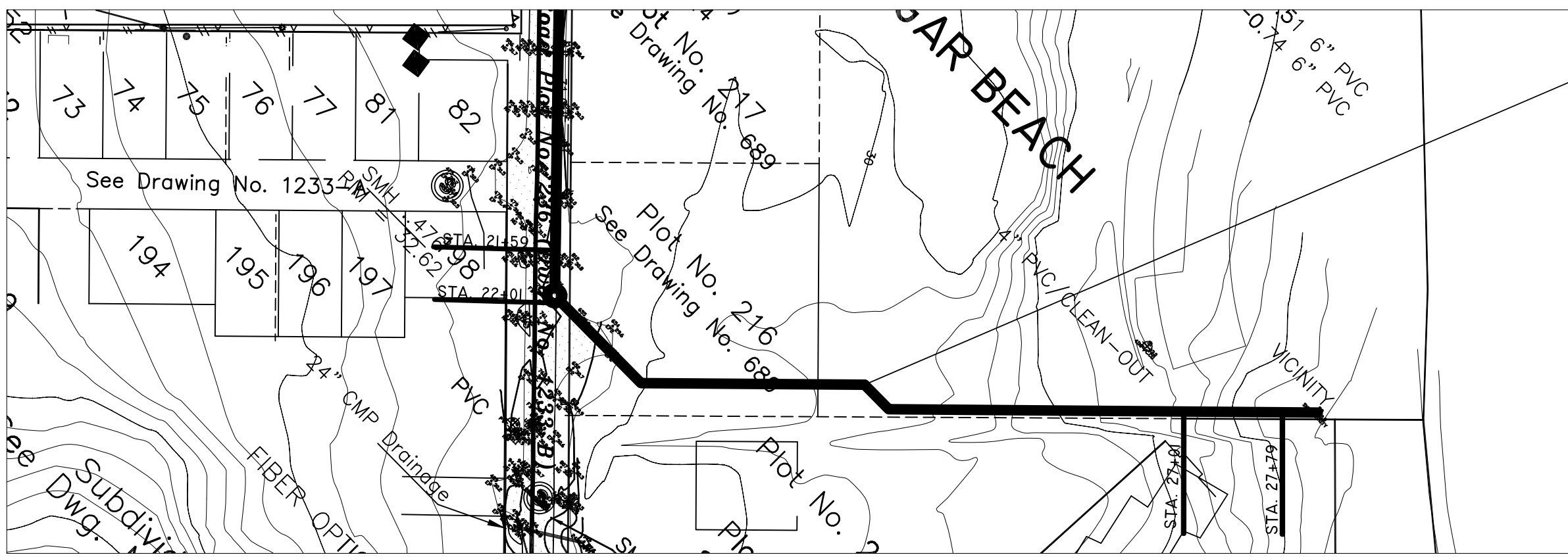
DATE: **09/10/13**
 DRAWN DESIGN BY: **T. U. ALBANY NICHOLAS**
 CHECKED BY: **JAMES GRUM, P.E.
CHIEF ENGINEER**
 APPROVED BY: **MAY ADAMS CORNWALL, P.E.
EXECUTIVE DIRECTOR**

PROJECT NO: _____

SHEET NO: **5 OF 6**

**SEWER LINE
PLAN AND PROFILE**





REVISIONS		
NO.	DATE	REMARKS
0	09/10/13	ISSUE FOR CONSTRUCTION

**ST. CROIX
COASTAL
INTERCEPTOR
RELOCATION**



VIWMA
 VIRGIN ISLANDS WASTE MANAGEMENT
 AUTHORITY
 941-946 Estate Williams Delight
 Frederiksted, VI 00840
 Telephone: 340.712.4962



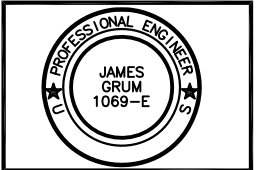
**COMPANY QUARTER
ST. CROIX, USVI**

DATE: **09/10/13**
 DRAWN DESIGN BY:
T. U. ALBANY NICHOLAS
 CHECKED BY:
**JAMES GRUM, P.E.
CHIEF ENGINEER**
 APPROVED BY:
**MAY ADAMS CORNWALL, P.E.
EXECUTIVE DIRECTOR**

PROJECT NO:

SHEET NO:
6 OF 6

**SEWER LINE
PLAN AND PROFILE**



VIRGIN ISLANDS WASTE MANAGEMENT AUTHORITY
U. S. VIRGIN ISLANDS

Sedimentation and Erosion Control Plan

PRELIMINARY

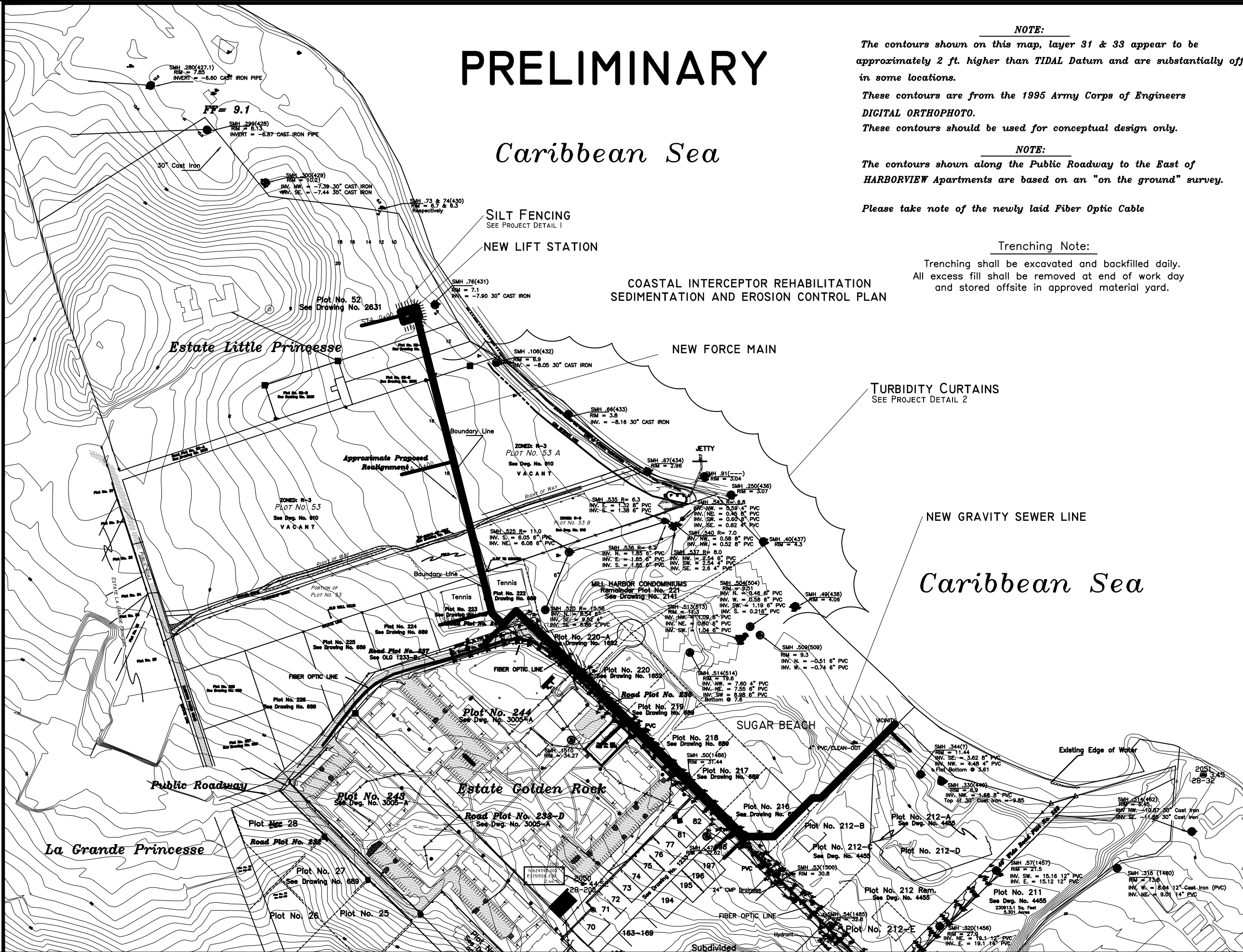
Caribbean Sea

COASTAL INTERCEPTOR REHABILITATION SEDIMENTATION AND EROSION CONTROL PLAN

NOTE:
The contours shown on this map, layer 31 & 33 appear to be approximately 2 ft. higher than TIDAL Datum and are substantially off in some locations.
These contours are from the 1995 Army Corps of Engineers DIGITAL ORTHOPHOTO.
These contours should be used for conceptual design only.

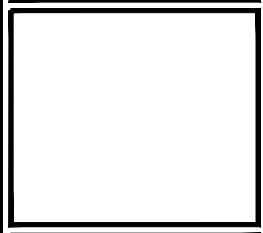
NOTE:
The contours shown along the Public Roadway to the East of HARBORVIEW Apartments are based on an "on the ground" survey.
Please take note of the newly laid Fiber Optic Cable

Trenching Note:
Trenching shall be excavated and backfilled daily.
All excess fill shall be removed at end of work day and stored offsite in approved material yard.



REVISIONS		
NO.	DATE	REMARKS
0	09/10/13	ISSUE FOR CONSTRUCTION

**ST. CROIX
COASTAL
INTERCEPTOR
RELOCATION**



VIWMA
VIRGIN ISLANDS WASTE MANAGEMENT
AUTHORITY
941-946 Estate Williams Delight
Frederiksted, VI 00840
Telephone: 340.712.4962

**COMPANY QUARTER
ST. CROIX, USVI**

DATE: **09/10/13**
DRAWN DESIGN BY:
T. U. ALBANY NICHOLAS
CHECKED BY:
**JAMES GRUM, P.E.
CHIEF ENGINEER**

APPROVED BY:
**MAY ADAMS CORNWALL, P.E.
EXECUTIVE DIRECTOR**

PROJECT NO:
23013.1

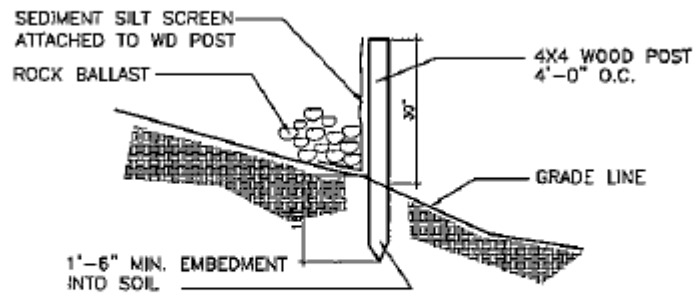
SHEET NO:
7 OF 7
**SEWER LINE
PLAN AND PROFILE**



VIRGIN ISLANDS WASTE MANAGEMENT AUTHORITY
U. S. VIRGIN ISLANDS

Coastal Interceptor Relocation

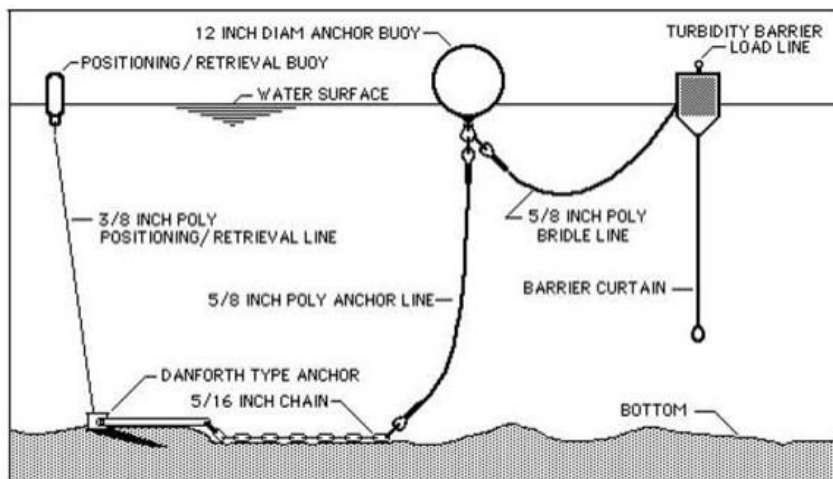
Detail of Turbidity Barrier Installation



Detail
1

TYPICAL SEDIMENT SILT SCREEN DETAIL

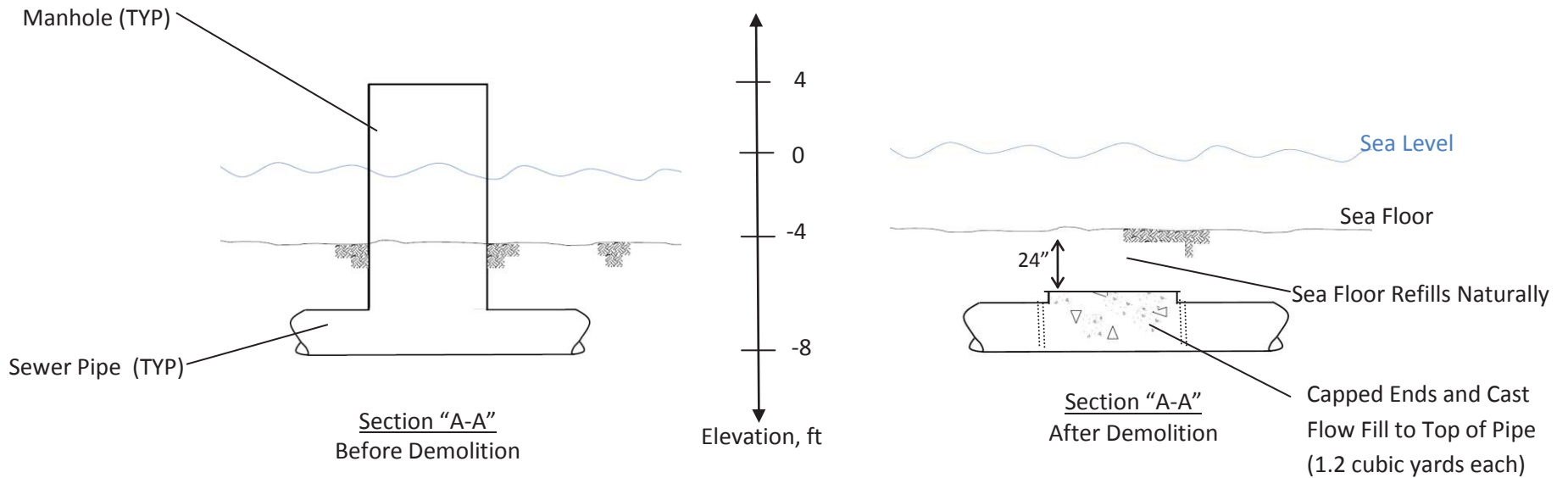
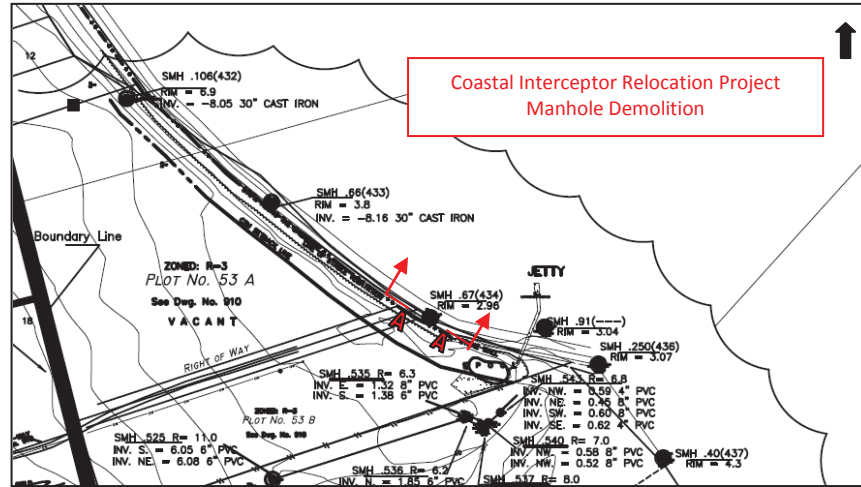
SCALE: NOT TO SCALE



Detail
2

BARRIER CURTAIN WITH ANCHOR KIT

SCALE: NOT TO SCALE



Coastal Interceptor Relocation Project: Typical Manhole Demolition
Elevation Varies with Manhole Location

NTS



941-946 Estate Williams Delight
Frederiksted, VI 00840
PH: 340.712.4962 FX: 340.719.8839