

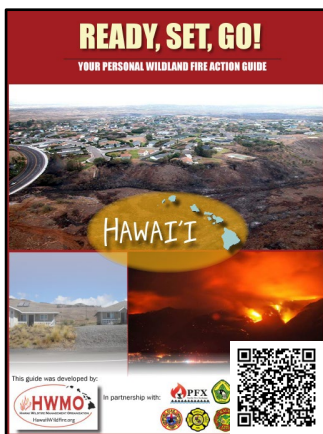
Wildfire Recovery Resources for Maui



As the recovery efforts continue on Maui, this is a current list of resources available at the one-year anniversary of the Maui wildfires. Homeowners, business owners, public officials, as well as design and construction professionals can benefit from using the following wildfire resources in recovery efforts. The FEMA Mitigation Assessment Team (MAT) will provide additional recovery-specific guidance to assist with the rebuilding and recovery.

Homeowner Specific

Hawai'i Resident Wildland Fire Action Guide from the Hawai'i Wildfire Management Organization (HWMO)



The [Hawai'i wildland fire action guide](#) explains:

- The conditions that contribute to wildfire
- Readiness strategies for homeowners in Hawai'i, including:
 - Wildfire-resilient retrofits
 - Defensible space
 - Creating your own wildfire emergency action plan
 - Residential safety checklist
- For information on providing protection for the immediate zone (0-5 ft) around home, see the Homeowner's Guide to Reducing Wildfire Risk Through Defensible Space

Scan the QR code included on the publication to access the resource.



FEMA

Tips for Firewise Landscaping for Hawai'i Brochure from the HWMO

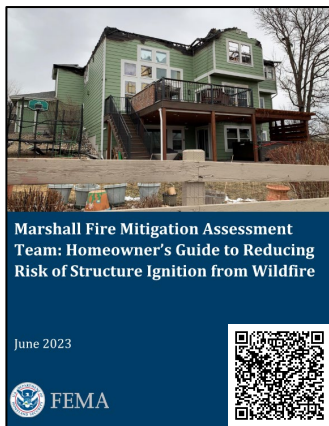


This [brochure](#) provides guidance on selecting suitable plants for your yard to reduce wildfire hazards. The tips for landscaping contain guidance for plant:

- Selection
- Placement
- Care

It also includes references to plants that should be avoided for their fire-promoting traits and tools to assist in the selection of non-invasive trees and plants.

Homeowner's Guide to Reducing Risk of Structure Ignition from Wildfire



This [FEMA Homeowner's Guide to Reducing Risk of Structure Ignition](#) provides homeowners with steps they can take now to decrease the chance their homes will ignite due to direct flame contact, ember intrusion, or hot gases from wildfires. These strategies address vulnerabilities at a home's joints, gaps, vents, and attachments such as decks and fences.

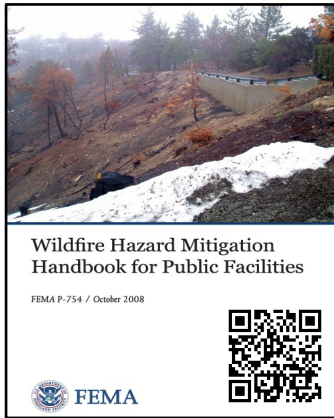
Homeowner's Guide to Reducing Wildfire Risk Through Defensible Space



This [FEMA Homeowner's Guide to Defensible Space](#) provides instructions on creating defensible space, with tips for homes where there is limited space between properties. This description of defensible space includes the "Immediate" 0 to 5 feet zone. The 0 to 5 feet zone information is not included in the Ready, Set, Go! Hawai'i Resident Wildland Fire Action Guide, but it is best practice to include this zone in the development of a home's defensible space to improve protection against wildfire damage.

Public Facilities and Businesses

Wildfire Hazard Mitigation Handbook for Public Facilities (FEMA P-754)



This [Wildfire Hazard Mitigation Handbook](#) recommends mitigation measures to reduce the vulnerability of facilities to wildfires. The strategies contained within it are eligible for funding assistance under FEMA's Public Assistance (PA) Program. The Handbook provides information about the typical ways the following facilities are damaged by wildfire and how to reduce the potential for damage:

- Buildings, recreational facilities, fences and walls
- Utilities
- Surface transportation safety facilities and bridges
- Retaining walls and erosion-control structures

Wildfire Ready Business Guide from the Insurance Institute for Business and Home Safety



This [Wildfire Ready Business Guide](#) from the Insurance Institute for Business and Home Safety (IBHS) provides guidance to business owners on preparing for and reducing damage associated with wildfires, including preparedness plans and resilient retrofits. This Guide is part of the IBHS Wildfire Ready series for Home and Business (see Additional Resources – Home Specific, below).

Community, Planners, and Homeowners

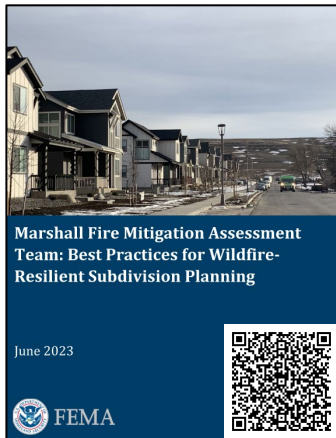
Technical Advisory: Mitigation Strategies to Address Multi-Hazard Events



This [FEMA Technical Advisory on Multi-Hazard Mitigation Strategies](#) is intended to help planners, developers, local land management personnel and private property owners identify how wildfires interact with other natural hazards and mitigate the impact of these multi-hazard events. The information in this document can be used to guide the incorporation of site-based wildfire mitigation strategies into planning, community siting and zoning requirements. This document can also guide the adoption of proactive planning, development and maintenance strategies that can minimize future risk of multi-hazard events. This document should be read in conjunction with [Technical Advisory: Best Practices for Wildfire-Resilient Subdivision Planning](#).

View the FEMA video training series on [Designing for Wildfires](#).

Technical Advisory: Best Practices for Wildfire-Resilient Subdivision Planning



This [FEMA Technical Advisory on Wildfire-Resilient Subdivision Planning](#) provides builders/contractors, planning professionals, HOAs, and local land resource managers with information about wildfire resiliency planning and open-space management policies, best practices, and procedures for subdivisions and neighborhoods. This document offers regulatory and policy approaches to limit the risk of wildfire impacts during planning and entitlement phases. It also includes approaches for holistic, ongoing management of communal open spaces, greenbelts, and proximate wildland spaces. This document should also be read in conjunction with [Technical Advisory: Mitigation Strategies to Address Multi-Hazard Events](#).

Technical Advisory: Decreasing Risk of Structure-to-Structure Fire Spread in a Wildfire



This [FEMA Technical Advisory on Decreasing Risk of Structure-to-Structure Fire Spread](#) provides recommendations to contractors and designers on new building construction that may prevent or slow the spread of a fire from structure-to-structure in densely-spaced neighborhoods. Specifically, this document outlines risk mitigation strategies for the components that causes structure-to-structure fire spread, including vulnerable building components (e.g., roof systems, composite siding, etc.) and building configuration, siting, and spacing.

Additional Resources

Maui Recovery

- [Disaster Recovery Building Permit](#) (County of Maui): Instructions on applying for a permit to repair, rebuild, or alter a structure damaged by qualifying disaster events.
- [Get Support at Resource Centers](#) (Maui Recovers): Comprehensive resource list for in-person support services.
- [Hawai'i Wildfires Disaster Assistance](#) (U.S. Small Business Administration): Guidance on applying for Small Business Administration Disaster Loans for homeowners, renters, small businesses, and nonprofits.
- [Homeowner's Rebuild Resource](#) (Helping Maui): A step-by-step guide to the rebuilding process for homeowners.
- [Insurance Fire Claim Information](#) (Hawai'i Department of Commerce and Consumer Affairs): Guidance and commonly asked questions on filing an insurance claim for property damaged by wildfires.

- [Maui Fires Recovery](#) (American Institute of Architects): This guide shares links to architects in Maui, Hawai'i, and abroad to assist in recovery. It provides links to helpful websites and resource documents.
- [Maui Recovers](#) (Maui Recovers): Community recovery news updates and a number of support resources for residents and businesses with opportunities to obtain in-person assistance for fire recovery.
- [Maui Recovery Assistance](#) (Hawai'i County): Resource hub offering assistance for housing, financial relief, employment, business, food, medical and transportation.

Maui Specific – Wildfire Protection Plans

These plans provide maps of communities at risk from wildfires, guidance for hazardous fuel reduction treatments and reducing structural ignitability.

- [South Maui - Community Wildfire Protection Plan](#) (Hawai'i Wildfire Management Organization)
- [Upcountry Maui – Community Wildfire Protection Plan](#) (Hawai'i Wildfire Management Organization)
- [Western Maui – Community Wildfire Protection Plan](#) (Hawai'i Wildfire Management Organization)

Construction, Building Codes and Standards

- [Building Codes](#) (County of Maui): The Development Services Administration provides an overview of the building codes enforced by the County of Maui, including the county and state amendments.
 - [2024 International Wildland Urban Interface Code](#) (International Code Council): Optional building code with provisions that help protect life and property from wildland fires, adjacent structure fires, and fires spreading through wildland fuels.
 - [2020 ICC 700 National Green Building Standard](#) (International Code Council): Voluntary building standard that offers design options for sustainable and cost-effective approaches for resource efficiency.
- [BusinessCheck – Contractor Licensing](#) (Hawai'i Department of Commerce and Consumer Affairs): Search tools to find a licensed contractor.
- [NFPA 1140 Standard Development](#) (National Fire Protection Association): Consolidates four previous National Fire Protection Association standards for wildland fire protection, covering topics including Wildland Firefighting Personnel Professional Qualifications; Fire Protection Infrastructure, Wildland Fire Management; and Reducing Structure Ignition Hazards from Wildland Fire.

Home Specific

- [Designing for Natural Hazards – Resilience Guide for Builders and Developers](#) (U.S. Department of Housing and Urban Development): Identifies resilient construction practices that can eliminate or minimize fire damage and provides cost estimates for those practices.

- [Home Disaster Guides](#) (Insurance Institute for Business & Home Safety): Guidance for making your home more prepared for wildfires, hurricanes, and thunderstorms with wildfire information associated with critical home preparations, exterior home upgrades, wildfire-resistant yards, and home evacuation steps.
- [Homeowner's Handbook to Prepare for Natural Hazards – Fourth Edition](#): (University of Hawai'i): Identifies key steps that Hawai'i homeowners can take to minimize structure ignition and tips for a resilient, adaptive, and sustainable yard.
- [Outdoor Fire Safety](#) (U.S. Fire Administration): Safety tips to keep residents fire safe while enjoying outside activities including grill fires, fire pits, campfires, chimney and outdoor fireplaces, and fireworks.
- [Protect Your Home from Wildfire](#): (Wildfire Prepared): Preventative measures to protect a home and yard against wildfire with steps to achieve a three-year designation certificate.
- [Wildfire Home Retrofit Guide](#) (Ready for Wildfire): Retrofit recommendations to help a home survive wildfires.
- [Wildfire Home Risk Assessment](#) (Hawai'i Wildfire Management Organization): Volunteer home assessors may be available to perform a free review of a home and yard for wildfire and ember ignition.

Other Resources for the Community, Businesses, and Homeowners

- [Fire Hazard Mitigation Methodology](#) (National Institute of Standards and Technology): Technical knowledge on combining property and community-level Wildland Urban Interface mitigation strategies, including defensible space, structural hardening, housing density, structure separation distance and property layouts.
- [Fire Science Highlights](#) (Pacific Fire Exchange): Fire science and research for practitioners, scientists, policymakers, and citizens within the US-affiliated Pacific Islands.
- [Suburban Wildfire Adaptation Roadmaps](#) (Insurance Institute for Business & Home Safety): The Suburban Wildfire Adaptation Roadmaps provide decision trees for homes and businesses that guide the reader through the choices and implementation of wildfire risk reduction strategies.
- [Wildfire and the Wildland Urban Interface \(WUI\) Resource Repository](#) (U.S. Fire Administration): Houses links for community planners on federal resources for trainings, creating fire-adapted communities, and federal wildland fire management strategies.
- [WUI Virtual Handbook](#) (Society of Fire Protection Engineers): Resource materials and fire mitigation strategies to fire departments for property risk assessments in the Wildland-Urban Interface.

This recovery information is provided as of August 2024. These website links can change or be retired at any time. If you encounter a broken website link, go to the website of the organization source and search for the topic, or use a search engine to locate the new website for the topic associated with the organization.