

# Tips for Removing Debris from Your Private Property

---

Release Date: Mar 13, 2025

Release Number: FS 003

*After the February severe storms and floods, homeowners may have questions or concerns about how to remove storm debris from their private property. Here are some tips that may be helpful.*

Debris includes, but is not limited to:

- Vegetative debris
- Construction and demolition debris
- Sand
- Mud
- Silt
- Gravel
- Rocks
- Boulders
- White goods (large domestic appliances such as refrigerators and washing machines)
- Vehicle and vessel wreckage

Please be aware that snow-related activities, including road clearing, are not considered debris operations, as snow is not considered a form of debris.

Removing debris can be a challenging job. As homeowners, you may remove debris or hire help through insurance settlements. You may also get help removing storm debris from citizen volunteers, the private sector and voluntary organizations.

Local governments often will dispose of disaster-related debris that private property owners place at the curb for pickup on a scheduled date.

Graphic



## Debris Removal Guidelines for Private Residential Properties

In efforts to expedite the debris removal process, please follow these rules.

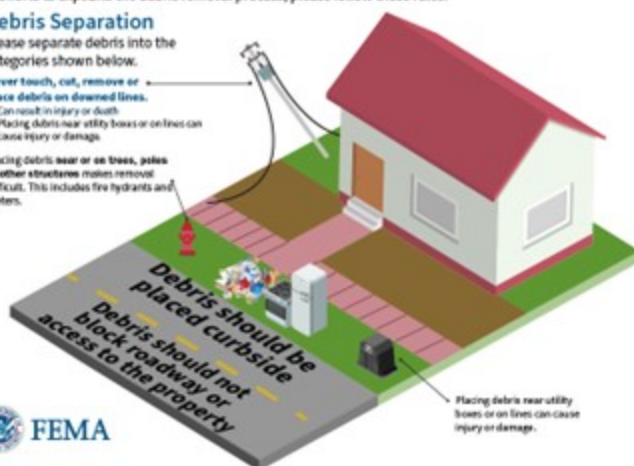
### Debris Separation

Please separate debris into the categories shown below.

Never touch, cut, remove or place debris on downed lines.

- Can result in injury or death
- Placing debris near utility boxes or on lines can cause injury or damage.

Placing debris near or on trees, poles or other structures makes removal difficult. This includes fire hydrants and meters.



Check with your local office of emergency management for more information on debris removal.



**Large Appliances**  
Refrigerator, washer/dryer, air conditioner, stove, water heater, dishwasher. Do not leave doors unsealed or unsecured.



**Construction Debris**  
Building materials, drywall, lumber, carpet, furniture, plumbing.



**Vegetative Debris**  
Tree branches, leaves, logs, plants.



**Hazardous Waste**  
Oil, battery, pesticide, paint, cleaning supplies, compressed gas.



**Electronics**  
Television, computer, stereo, phone, DVD player.

Tips for cleaning up debris on private property:

- **Stay safe.** Wear protective gear such as gloves and masks when handling debris. Contact your local emergency manager if your property is littered with storm-related debris that you suspect poses a threat to public health or safety. As you clear debris, look carefully for any visible cables – such as electrical lines. If you see any cables, wait for professionals to handle them.
- **Avoid toxic substances.** If you suspect the debris contains dangerous ingredients, seal them in plastic bags to prevent them from becoming airborne. Don't burn debris you suspect may be toxic.
- **Check with local officials** before placing debris for collection.
- **Place debris away** from trees, poles or structures including fire hydrants and meters.
- **Do not block roadways with debris.**

When in doubt, contact your local emergency manager for guidance. To find your local emergency manager and other local resources, visit [www.fema.gov/disaster/4860#local-resources](http://www.fema.gov/disaster/4860#local-resources).

For more information about Kentucky flooding recovery, visit [www.fema.gov/disaster/4860](http://www.fema.gov/disaster/4860). Follow the FEMA Region 4 X account at [x.com/femaregion4](https://x.com/femaregion4).



FEMA