



# Shelter-in-Place for Earthquake

During an earthquake, stay where you are. **Drop, Cover and Hold On.**



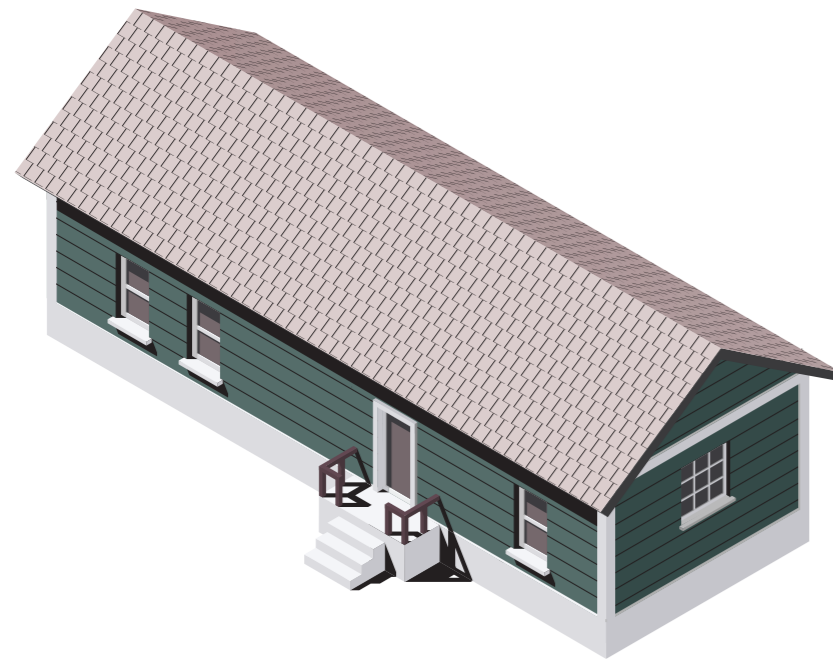
Visit <https://community.fema.gov/ProtectiveActions/s/> for more information



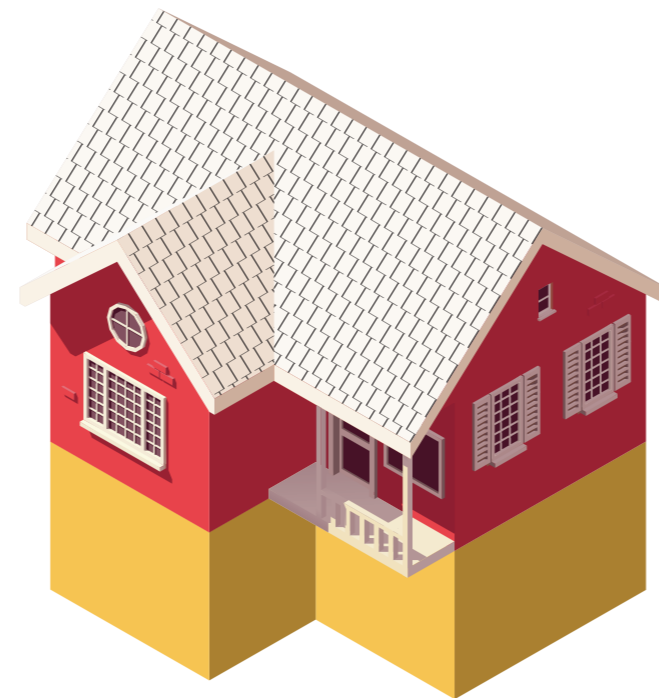
# Shelter-in-Place for Earthquake

If you are inside, **do not run outside.**

**Manufactured or Mobile Home**



**1- or 2-Story Building**



**Multistory Building**



**Do not use elevators.**



- Do not run outside.**
- Do not stand in doorframes.**

Visit <https://community.fema.gov/ProtectiveActions/s/> for more information



# Shelter-in-Place for Earthquake

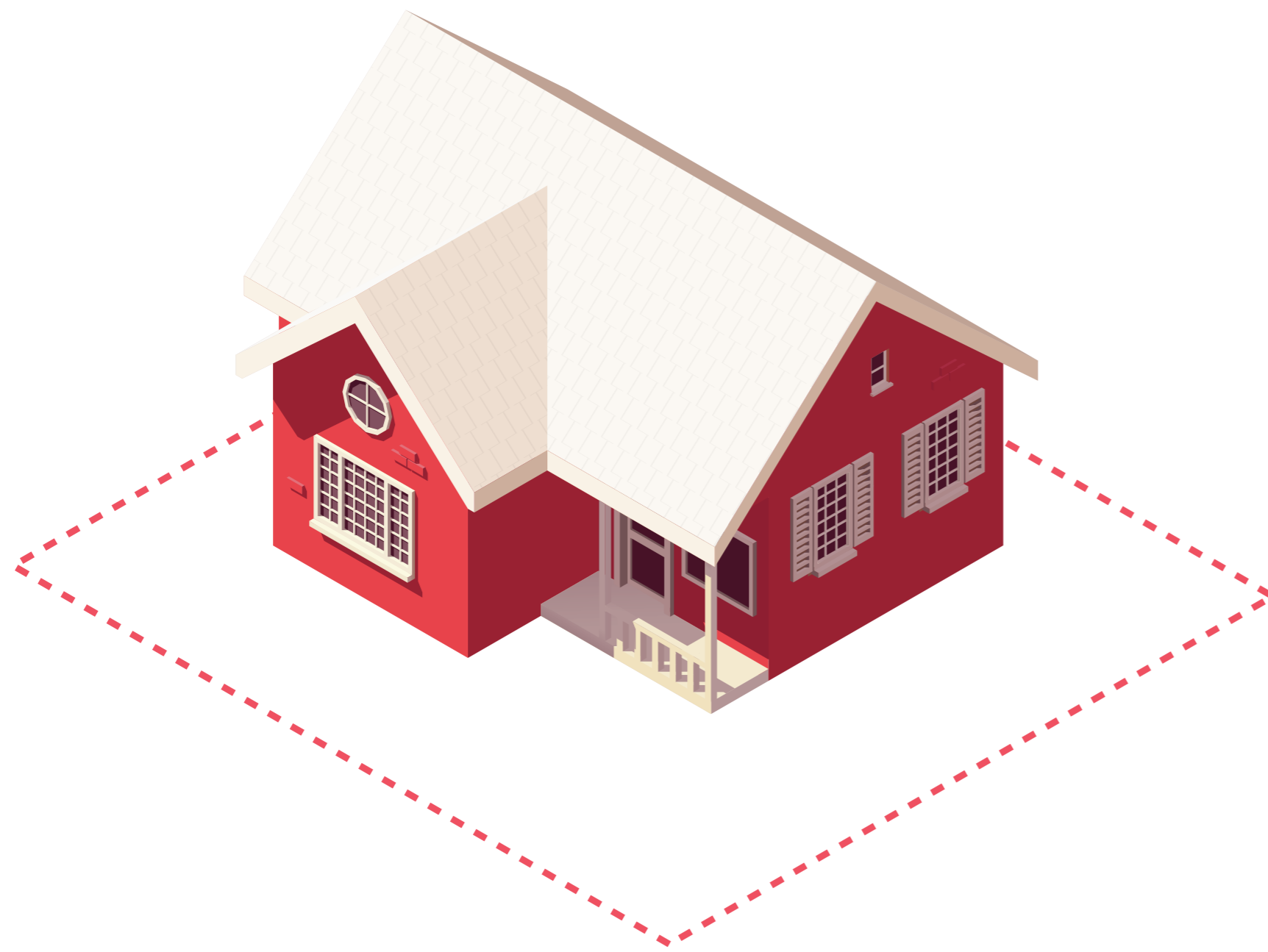


In bed, turn face down and **cover** your neck and head with a pillow or your arms.



# Shelter-in-Place for Earthquake

If you are inside, do not run outside.

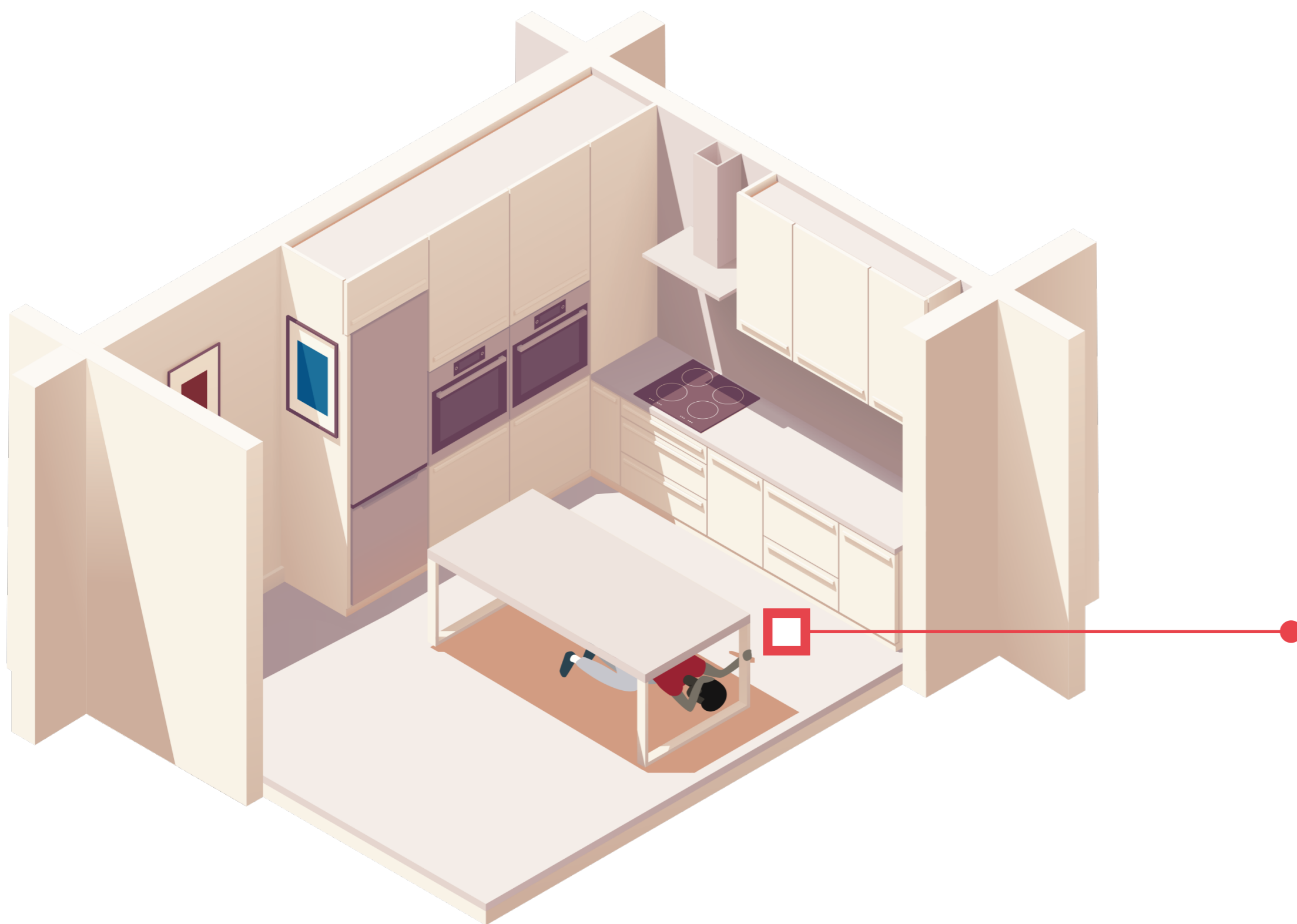


If you are outside, move away from buildings, **drop**, **tuck** your body, and **cover** your head.

Visit <https://community.fema.gov/ProtectiveActions/s/> for more information



# Shelter-in-Place for Earthquake



**Drop**, take **cover** under a sturdy table, **hold on** and cover your neck and head.



# Shelter-in-Place for Earthquake

## Take Additional Safety Measures

### Drop, Cover, and Hold On.

- **Drop** to your hands and knees so you don't fall.
- Take **Cover** under sturdy furniture. If not available, tuck and cover your neck and head with a coat, blanket, cushion, or your arms.
- **Hold On** to the furniture so you stay covered.
- Crawl only if you can reach better cover without going through an area with more debris.

Expect aftershocks. When they happen, **Drop, Cover, and Hold On** again.

If you are in a high-rise building, expect fire alarms and sprinklers to go off. **Do not** use elevators.

Act now to secure TVs, shelves and other heavy furniture.

Visit <https://community.fema.gov/ProtectiveActions/s/> for more information